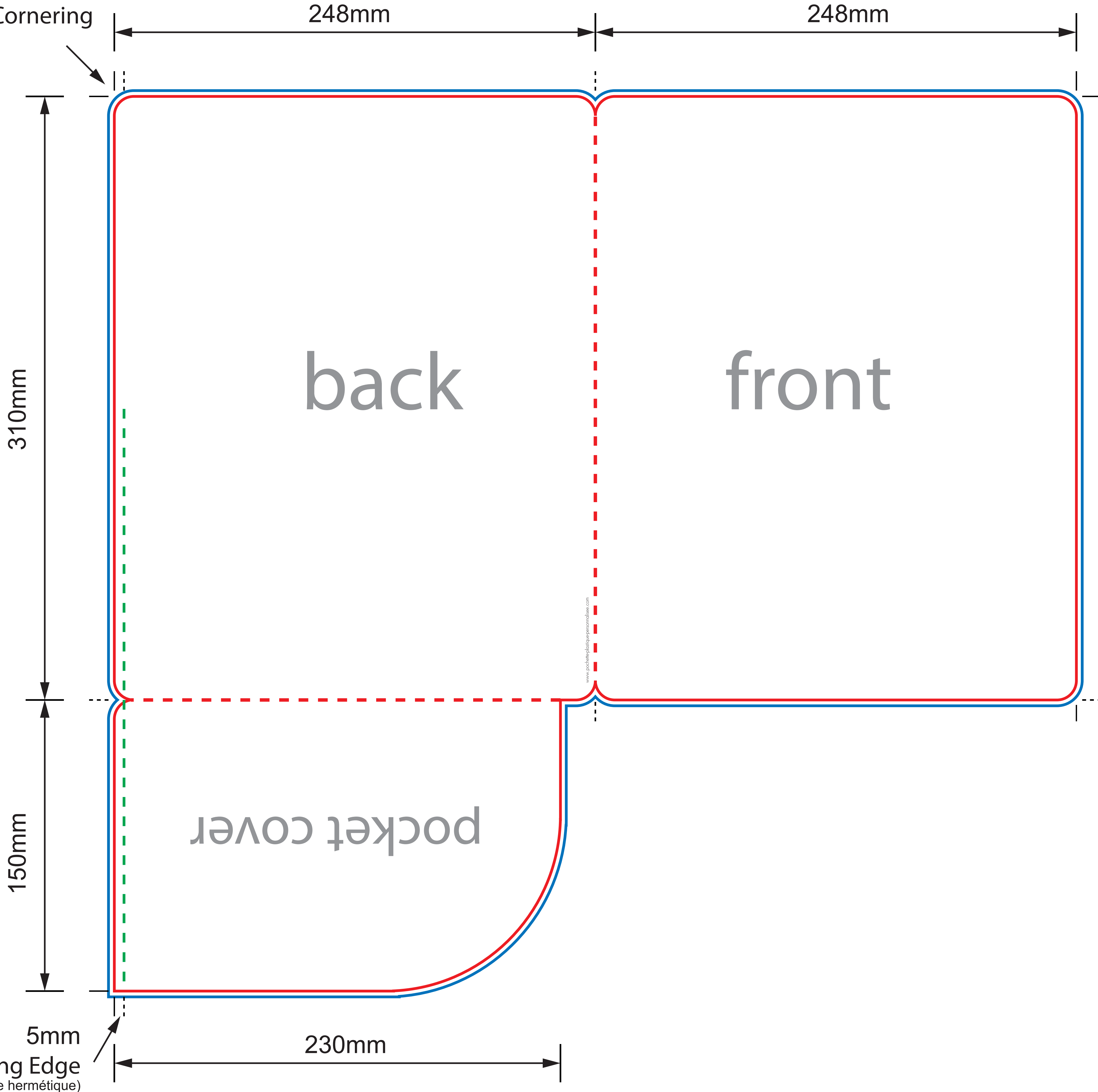


Finish Size :

310mm (H) x 248mm (W)

- Die-cut (Format fini)
- - - Creasing Line (Marque de pliage)
- - - 5mm Sealing Edge (bord de fermeture hermétique)
- 3mm Bleeding Area (zone de fond perdu)

10mm
Round Cornering
(Arrondi)



5mm
Sealing Edge
(fermeture hermétique)

230mm

150mm

310mm

248mm

248mm

back

front

pocket cover